

Shower Panel

Installation and Operation Manual

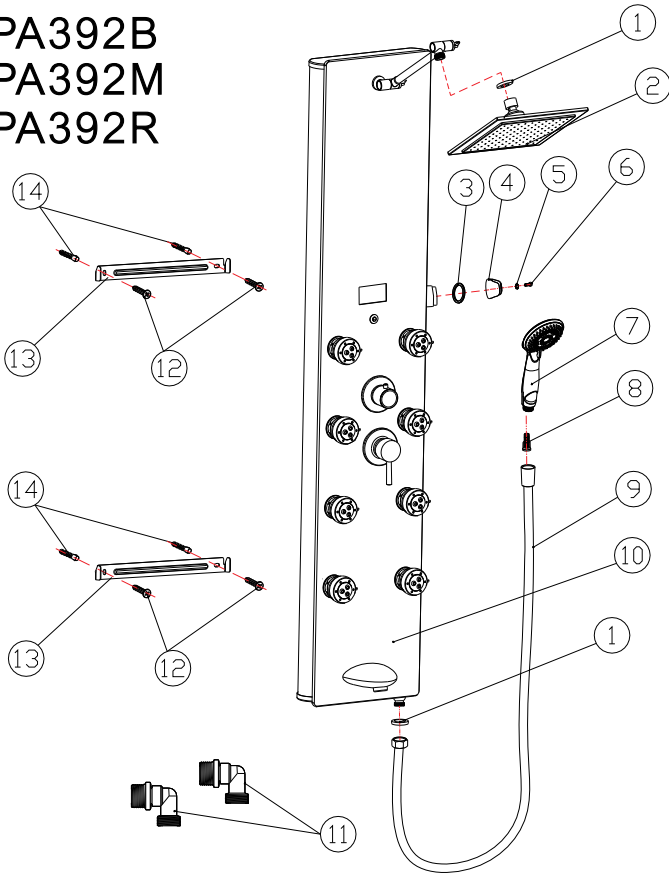
Caution:

Before connecting the shower panel, please flush out the debris inside the hot and cold water pipe. Installation without flushing out the debris may reduce water pressure, and cause damage and clog to the hose and pipe



1.Part List

SPA392B
SPA392M
SPA392R

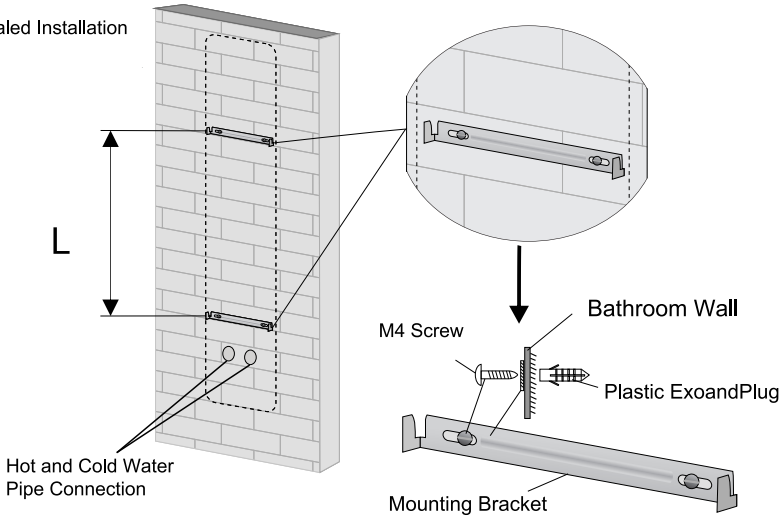


①	Rubber Washer	⑧	Shower Head Filter
②	Rainfall Shower Head	⑨	Shower Head Hose
③	Shower Head Holder Washer	⑩	Shower Panel Body
④	Shower Head Holder	⑪	Brass Elbow(Optional Part)
⑤	M4 Ring	⑫	M4 X 20 Screws
⑥	M4X16 Screw	⑬	Mounting Bracket
⑦	Handheld Shower Head	⑭	Plastic Expand Plug

4. Installing the mounting bracket:

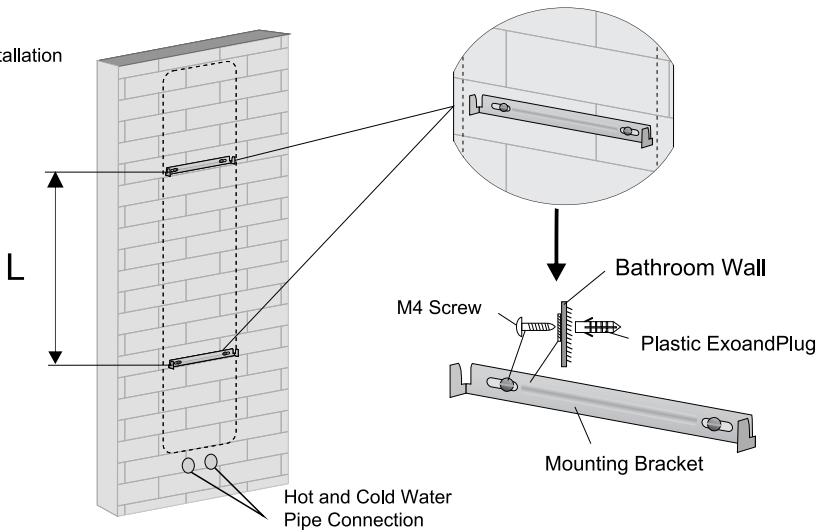
Based on the height you want to install the shower panel, mark and drill 4 screw holes on the wall. Once the holes are drilled, put in the plastic expand plug and screw the mounting bracket onto the wall. When screwing the mounting bracket, please make sure that it is being screwed on a wood stud behind the wall in order to provide sufficient strength to hold the shower panel.

Concealed Installation



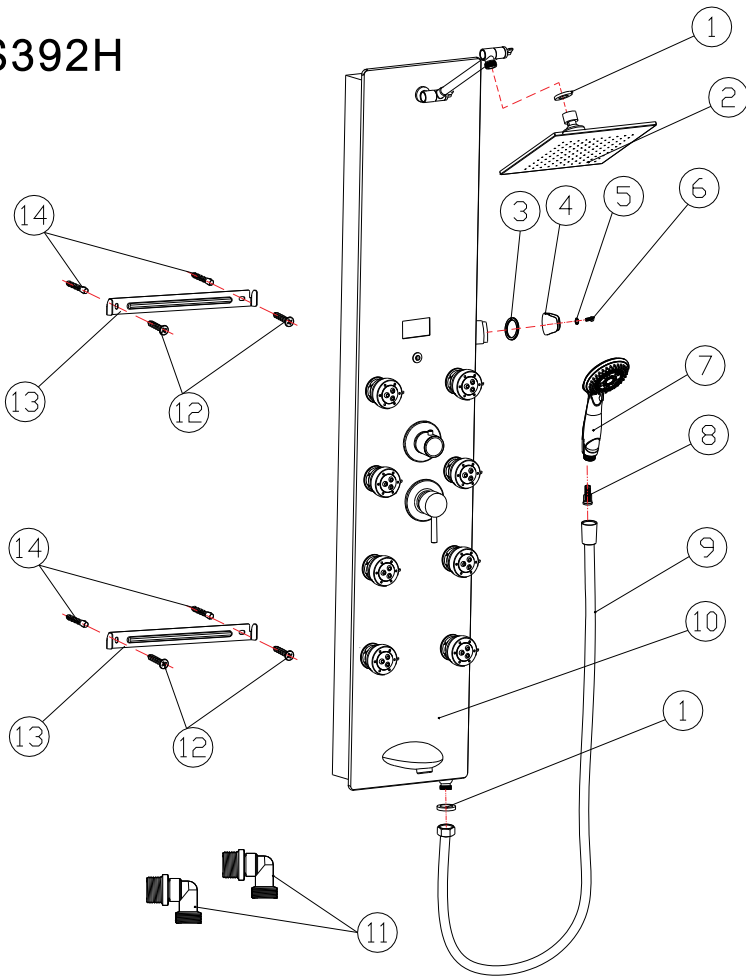
style	392M/B/R	331B	392H
L	650 MM	650 MM	510 MM

Unfold Installation



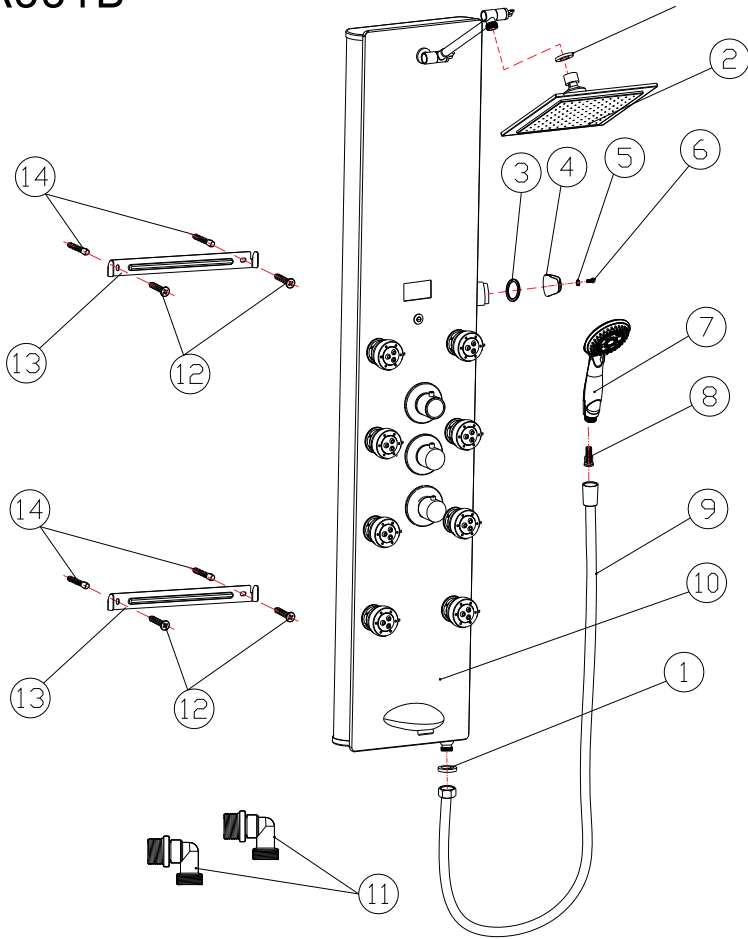
style	392M/B/R	331B	392H
L	650 MM	650 MM	510 MM

SPS392H



①	Rubber Washer	⑧	Shower Head Filter
②	Rainfall Shower Head	⑨	Shower Head Hose
③	Shower Head Holder Washer	⑩	Shower Panel Body
④	Shower Head Holder	⑪	Brass Elbow(Optional Part)
⑤	M4 Ring	⑫	M4 Screws X 20
⑥	M4X16 Screw	⑬	Mounting Bracket
⑦	Handheld Shower Head	⑭	Plastic Expand Plug

SPA331B

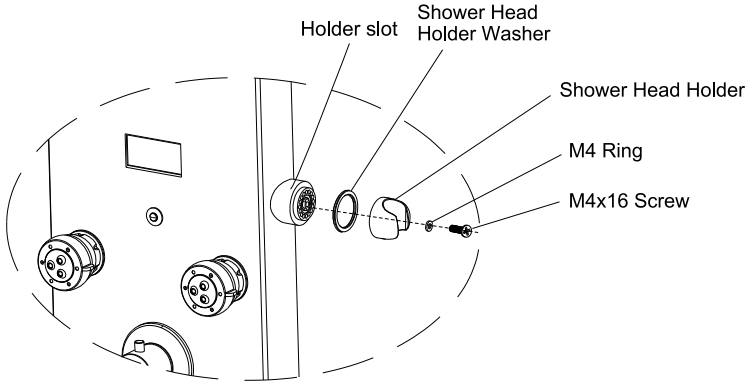


①	Rubber Washer	⑧	Shower Head Filter
②	Rainfall Shower Head	⑨	Shower Head Hose
③	Shower Head Holder Washer	⑩	Shower Panel Body
④	Shower Head Holder	⑪	Brass Elbow(Optional Part)
⑤	M4 Ring	⑫	M4 X 20 Screws
⑥	M4X16 Screw	⑬	Mounting Bracket
⑦	Handheld Shower Head	⑭	Plastic Expand Plug

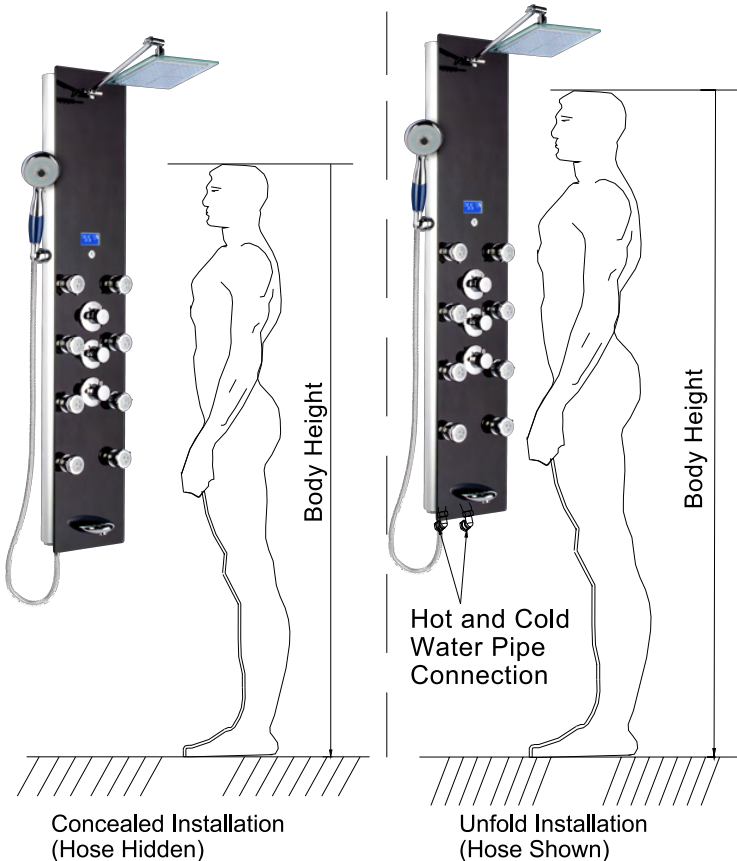
2. Installation

1) Installing the handheld shower head holder

Place the shower head holder washer into the slot, and put on the shower head holder. Use M4 ring and M4X16 screw to secure the shower head holder into the slot

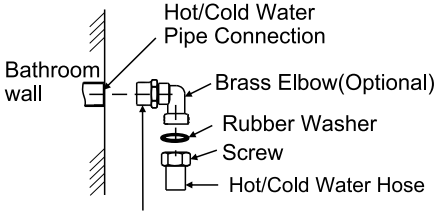


3. Based on the height of the user(s) and location of the hot/cold pipe inlet, select concealed or unfold installation. (See picture below)



5. Connecting and Hanging of Shower Panel Body

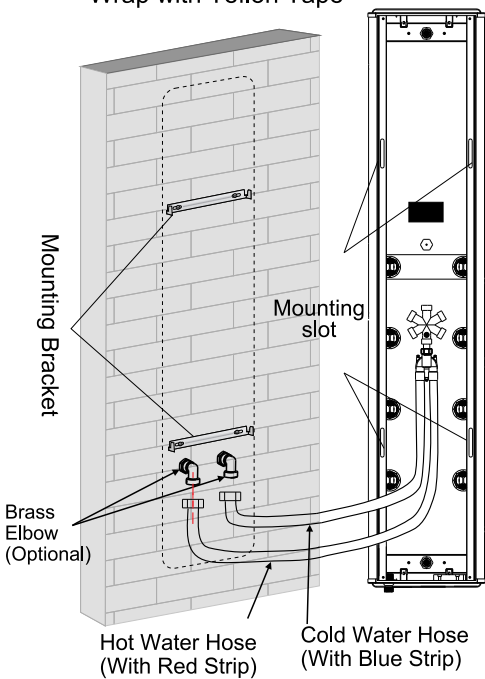
Before connecting, please switch on water supply to flush out the debris (i.e. rust and small particle) inside the water pipe. Failure to do so may causes hoses to be clogged. To install, use Teflon Tape around the fitting of the water pipe, insert a rubber washer with mesh onto the hoses, and simply connect the 1/2 "hoses with a 1/2" pipe fitting. After the connection is done, switch on the water to make sure no leaking occurs. To mount the shower panel, screw the mounting bracket onto the wall, and simply mount the shower panel onto the mounting bracket. When screwing the mounting bracket, please make sure that it is being screwed on a wood stud behind the wall to provide sufficient strength to hold the shower panel. (See Picture Below)



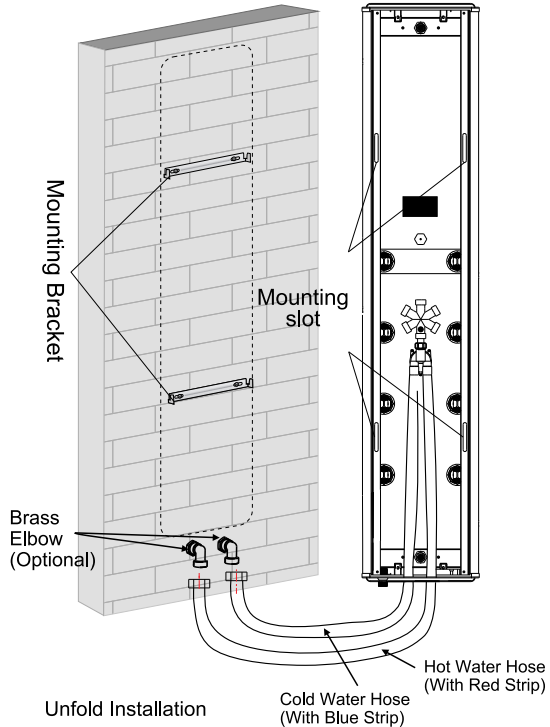
the bent pipe can be turned 360°



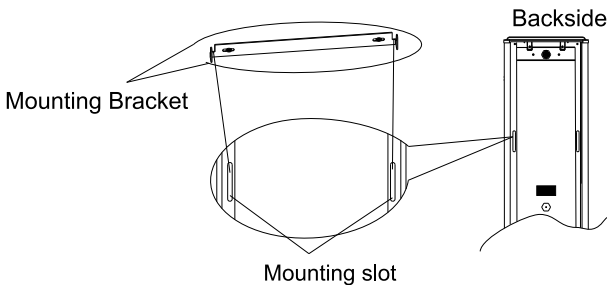
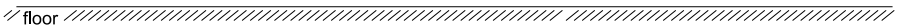
Wrap with Teflon Tape



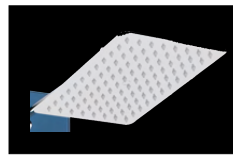
Concealed Installation



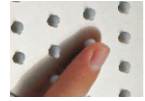
Unfold Installation



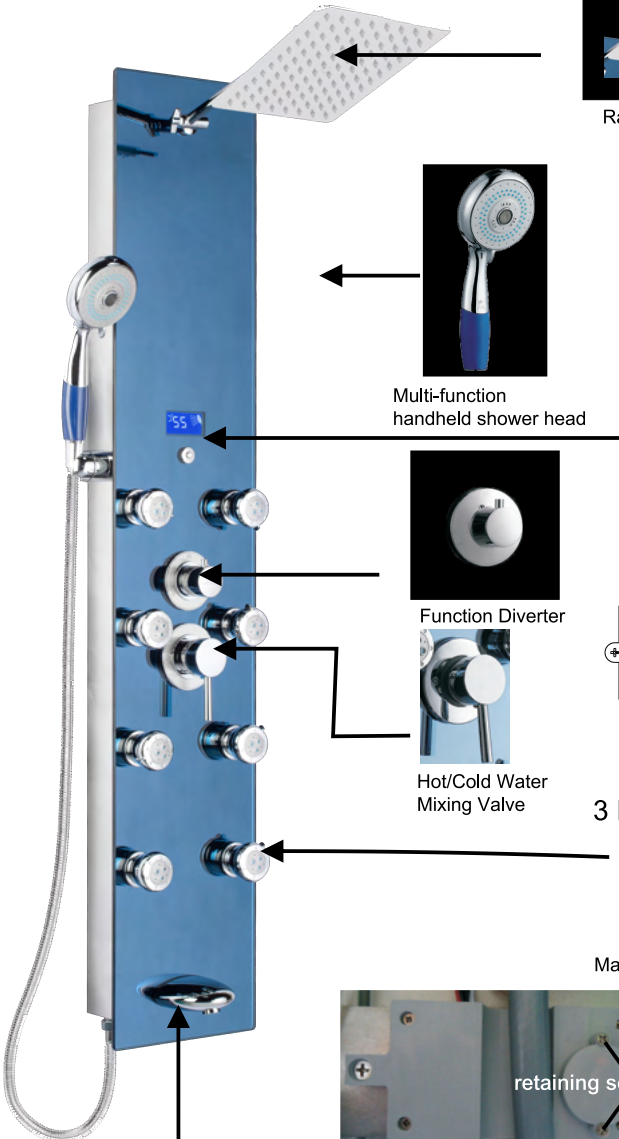
6. Shower and Display Operation



Rainfall Shower Head



Simply wipe the rubber nozzle to prevent clogging



Multi-function handheld shower head



Function Diverter



Hot/Cold Water Mixing Valve

Temperature Display
Display can be powered by hydro when there is water running or be powered by 2 AA batteries.

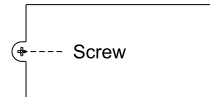


0 to 33 Degree Celsius
Display shows Blue color.

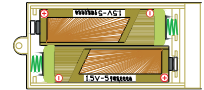


33 Degree Celsius Display
shows Red/Orange color.

⊖ On/Off button for display
(only when battery is used)



Screw



Battery slot is located underneath the shower panel and it can be accessed from the outside without un-mounting the shower panel. Two AA batteries are needed for the battery slot.

3 Function jet



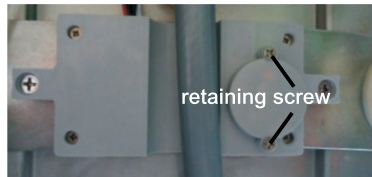
Massage Function



Mist Function



Mist & Massage Function



retaining screw

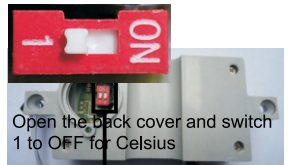
Take out this two screws behind the indicator (as above)
Take off the cover (as above)



Open the back cover and switch 1 to ON for Fahrenheit



Tub Spout



Open the back cover and switch 1 to OFF for Celsius



*When screwing the cover back on to the display, please make sure not to over tighten the screw, or it might break the cover