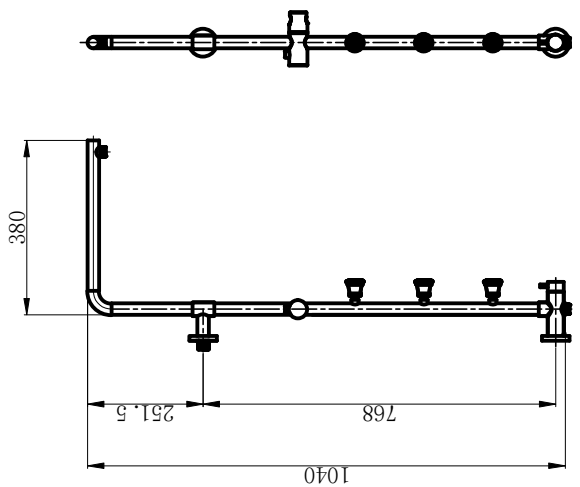
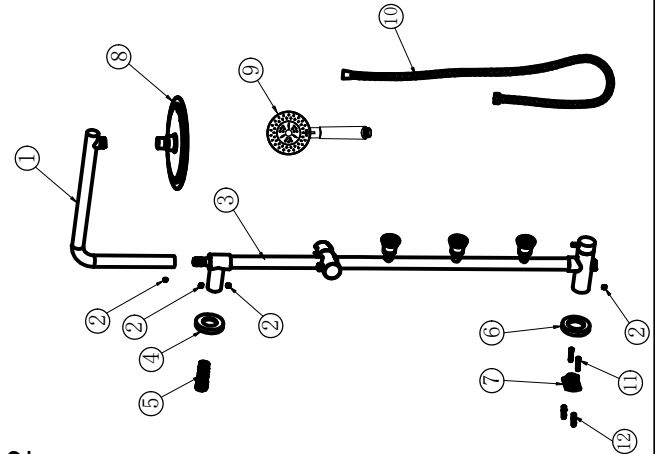


1

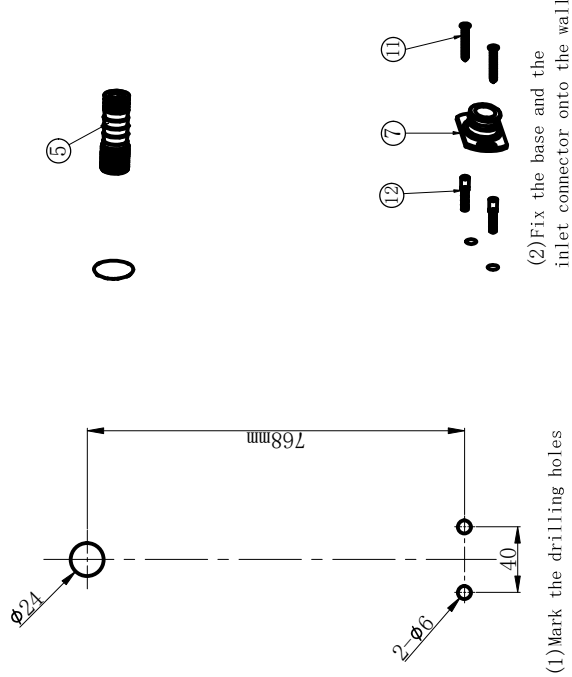


2



Parts	QTY
1. Upper Tube	1
2. Screw M5	4
3. Lower Tube	1
4. Flange	1
5. Inlet Connector	1
6. Flange	1
7. Base	1
8. Head Shower	1
9. Hand Shower	1
10. 1.5 Meter Hose	1
11. M4 Screw	2
12. Blastic Bush	2

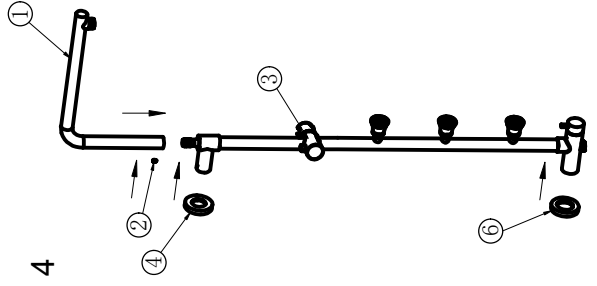
3



(1) Mark the drilling holes

(2) Fix the base and the inlet connector onto the wall

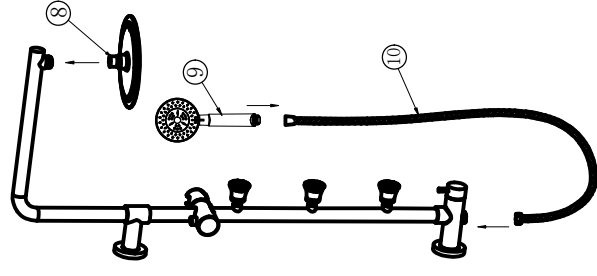
4



(1) Assemble the upper and lower tubes and flanges

(2) Fix the tube onto the bases and inlets on the wall and fasten with screws

5



(1) Assemble the head shower, hand shower and the hose